

# Practical English Getting lost

asking for directions

V directions

## 1 A FREE MORNING



- a **7.19** Watch or listen to Rob and Jenny planning their free morning. What's the problem?



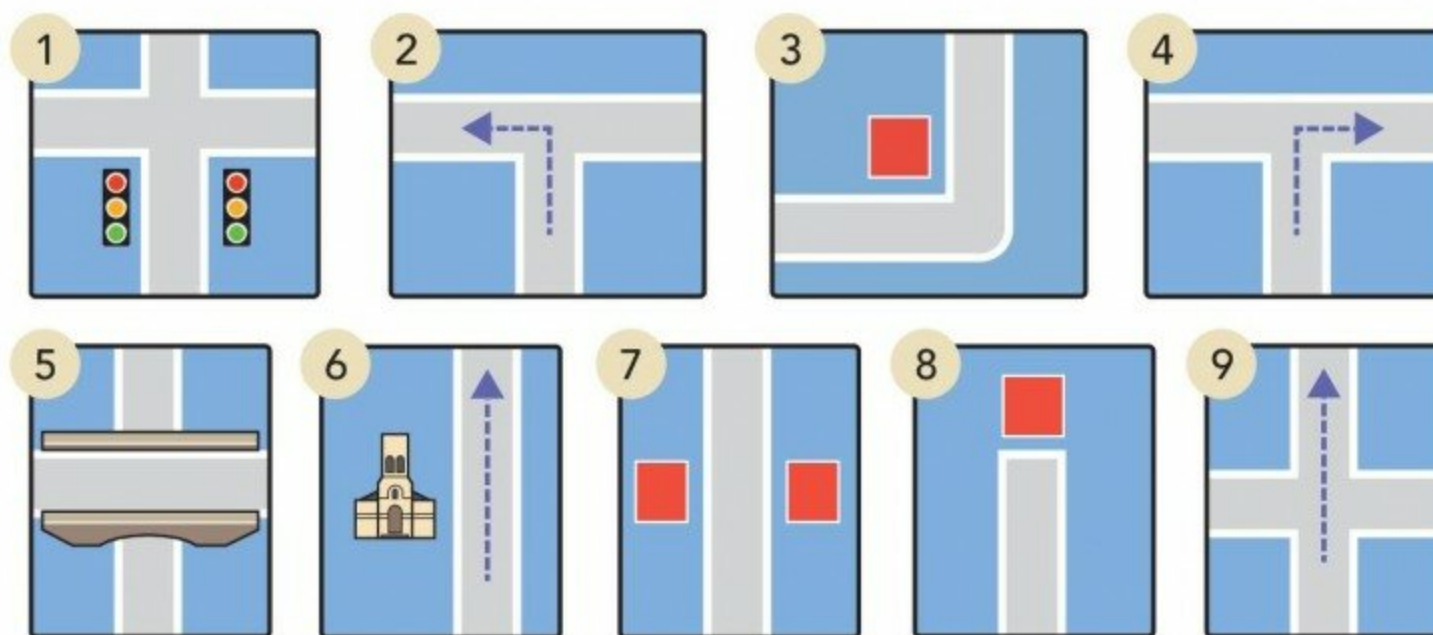
- b Watch or listen again. Complete the sentences with a word, a name, or a number.
- 1 Rob suggests that they go \_\_\_\_\_.
  - 2 He says that they can \_\_\_\_\_ bikes.
  - 3 \_\_\_\_\_ calls \_\_\_\_\_.
  - 4 Rob needs to interview an \_\_\_\_\_.
  - 5 Rob asks if he can do the interview on \_\_\_\_\_.
  - 6 Rob and Jenny arrange to meet at \_\_\_\_\_ o'clock outside the Tate Modern.

### Glossary

(the) Tate Modern a famous art gallery in London

## 2 VOCABULARY directions

- a Match the phrases and pictures.



on the corner /'kɔːnər/

at the traffic lights /'træfɪk laɪts/

go straight ahead /streɪt ə'hed/

go past the church /pæst/

at the end of the street

a bridge /brɪdʒ/

across (from) /ə'krɒs/

turn left /tɜːn left/

turn right /tɜːn raɪt/

- b **7.20** Listen and check.

- c Cover the phrases and look at the pictures. Say the phrases.

### American and British English

#### American English

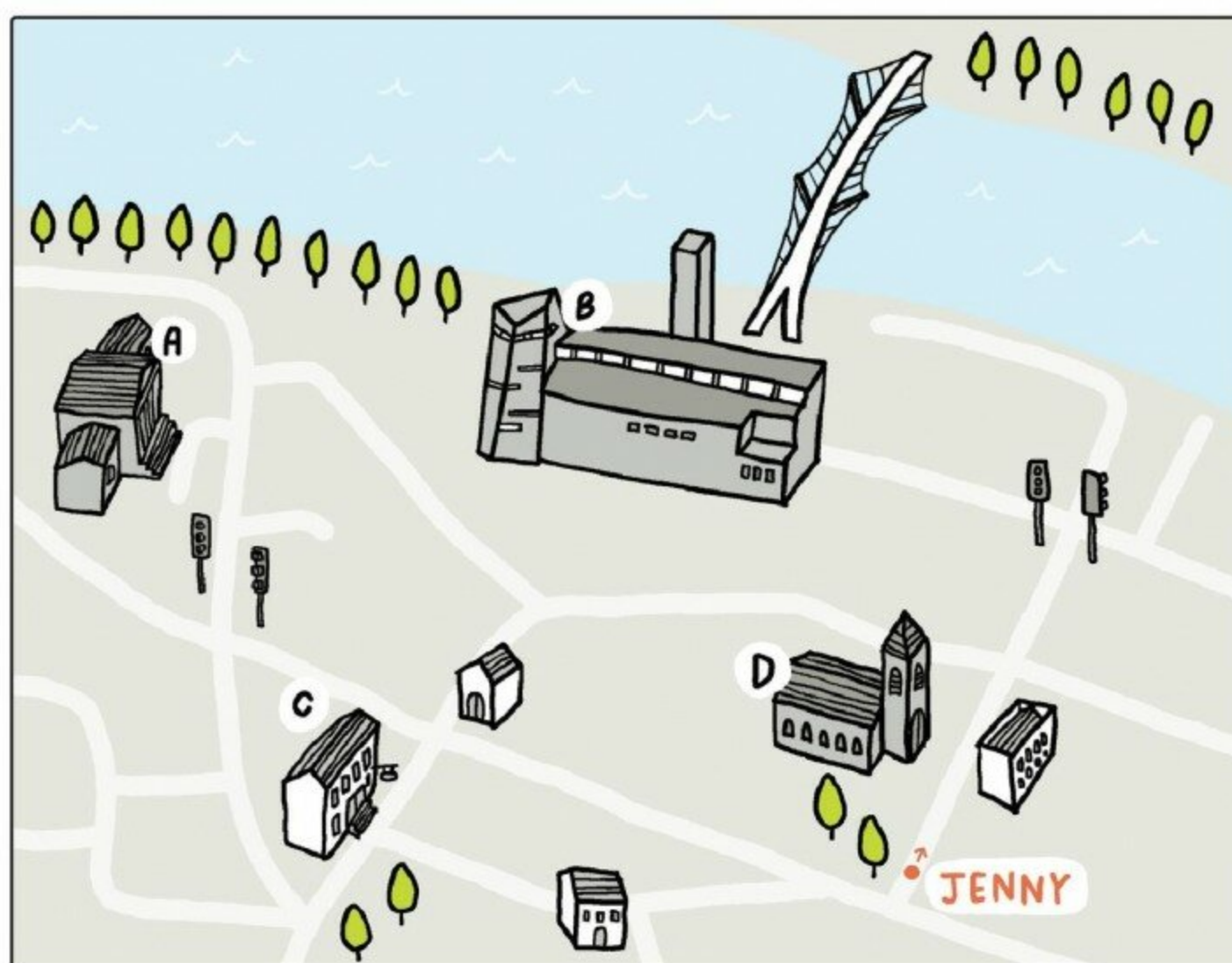
go straight ahead  
across from

#### British English

go straight on  
opposite

## 3 ASKING FOR DIRECTIONS

- a **7.21** Jenny is trying to find the Tate Modern. Watch or listen. Is it A, B, C, or D? How many people does she ask?







- b Watch or listen again. Complete the **You hear** phrases.

You say	You hear
Excuse me, please. Where's the Tate Modern?	<sup>1</sup> _____, I don't live here.
Excuse me. Is the Tate Modern near here?	The Tate Modern? It's near here, but I don't know exactly <sup>2</sup> _____. Sorry.
Thank you.	
Excuse me. Can you tell me the way to the Tate Modern, please?	Yes, of course. Go straight on. Go <sup>3</sup> _____ the church. Then turn <sup>4</sup> _____ at the traffic lights. And it's at the end of the street.
Sorry, could you say that again, please?	Yes, go straight on. ...You can't <sup>5</sup> _____ it!
Thank you.	

- c **7.22** Watch or listen and repeat the **You say** phrases. Copy the rhythm.
- d Practice the conversation with a partner.

**Can you...? or Could you...?**  
 Can you tell me the way to the Tate Modern?  
 Could you say that again, please?  
 We can use *Can you...?* or *Could you...?* when we want to ask another person to do something. *Could you...?* is more polite.

- e **In pairs**, role-play the conversation.  
 You are where Jenny is.  
**A** Ask for directions to building A (the library). Begin *Excuse me, where's...*  
**B** Give directions. Then change roles. **B** ask for directions to building C (the post office).

## 4 **JENNY AND ROB GO SIGHTSEEING**

- a **7.23** Watch or listen to Rob and Jenny. Circle the correct option.

- The Millennium / London Bridge* is only for people.
- It was the first new bridge over the Thames in *100 / 200* years.
- Jenny doesn't like *the theater. / Shakespeare*.
- Jenny *can / can't* meet Daniel for lunch.
- There's a great *gift shop / restaurant* on the top floor of the Tate Modern.
- The Tate Modern was a *power / train* station until 1981.



- b Look at the **Social English** phrases. Who says them: **Jenny**, **Rob**, or **Daniel**?

### **Social English**

- ☐ What a view!
- ☐ What would you like to visit?
- ☐ What is there to see?
- ☐ We could go to the Globe Theatre.
- ☐ Would you like to meet for lunch?
- ☐ That's really nice of you.
- ☐ Maybe another time?
- ☐ Yes, of course.

- c **7.24** Watch or listen and check. Then watch or listen and repeat.
- d Complete conversations A–H with **Social English** phrases 1–8. Practice with a partner.

A	What can we do this afternoon?	<input type="checkbox"/> I love Shakespeare!
B	We have all day in Oxford. <input type="checkbox"/>	I'd like to see the colleges and the High Street.
C	Let's go to the Tate Modern.	It's closed today. <input type="checkbox"/>
D	What are you doing at noon? <input type="checkbox"/>	Yes, I'd love to.
E	<input type="checkbox"/> I can see St. Paul's cathedral.	Yes, and the London Eye's over there.
F	Can you tell me the way to Victoria Station?	<input type="checkbox"/> Go straight down there and turn left.
G	I hear the British Museum is great. <input type="checkbox"/>	Right now, there's a new exhibition about the Greeks.
H	Would you like to go out tonight?	<input type="checkbox"/> But I'm afraid I'm busy tonight.

### **CAN YOU...?**

- ☐ ask for and understand directions
- ☐ give simple directions
- ☐ ask somebody to do something in a polite way