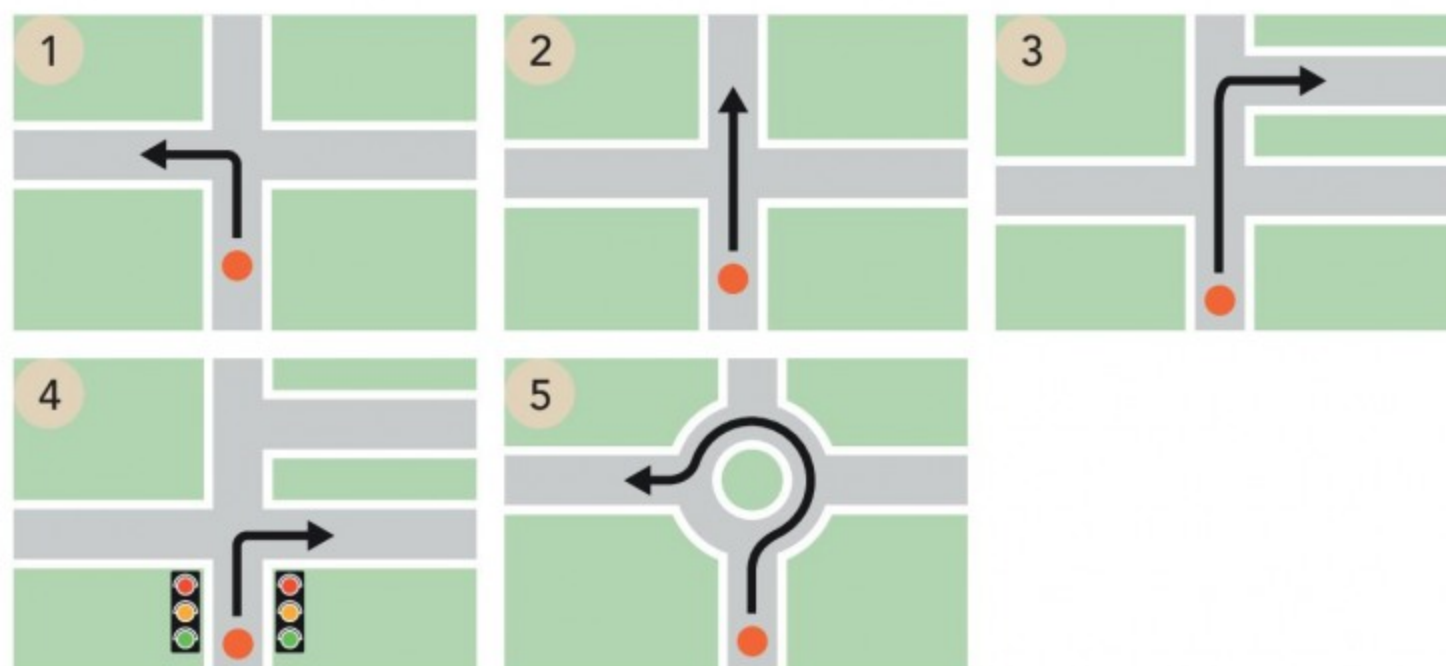


1 HOLLY AND ROB IN BROOKLYN



2 VOCABULARY directions



a Look at the pictures and complete the phrases.

- 1 Turn _____.
- 2 Go _____ ahead.
- 3 Take the _____ turn on the right.
- 4 Turn right at the _____ lights.
- 5 Go around the _____ and take the third exit.

b 9.18 Listen and check.

c Cover the phrases and look at the pictures. Say the phrases.

American and British English
 go straight ahead = American English
 go straight on = British English

a 9.17 Watch or listen to Rob and Holly. Mark the sentences **T** (true) or **F** (false).

- 1 Rob has just done an interview.
- 2 He is in a hurry.
- 3 He has another interview in Manhattan.
- 4 He has another coffee.
- 5 Barbara calls Rob.
- 6 The restaurant is booked for seven o'clock.

American and British English
 restroom = American English
 toilet = British English
 the subway = American English
 the underground = British English

b Watch or listen again. Say why the **F** sentences are false.

3 ASKING HOW TO GET THERE


a 9.19 Cover the conversation on p.77 and watch or listen. Mark Rob's route on the map.





- b Watch or listen again. Complete the **You hear** phrases.

You say	You hear
How do I get to Greenwich Village on the subway?	Go to the subway station at Prospect Park. ¹ _____ the B train to West 4th Street.
How many stops is that?	Six or seven.
OK. And then?	From West 4th Street take the A train, and get ² _____ at 14th Street.
Could you say that again?	OK. From Prospect Park take the B train to West 4th Street, and then take the A train to 14th Street. That's only one ³ _____.
Where's the restaurant?	Come out of the subway on Eighth Avenue, go ⁴ _____ on for about 50 yards and take the ⁵ _____ left. That's Greenwich Avenue. The restaurant's on the ⁶ _____. It's called The Tea Set.
OK, thanks. See you later.	And don't get ⁷ _____!

- c **9.20** Watch or listen and repeat the **You say** phrases. Copy the rhythm.
- d Practice the conversation with a partner.
- e  In pairs, role-play the conversation.
- A B is at Prospect Park. Choose a destination on the subway map. Give B directions. You start with *Go to the subway station at...*
- B Follow A's directions, and tell A which subway stop you have arrived at. Were you right?
- f Change roles.

(Take the B train to... Then...

4 ROB IS LATE...AGAIN







- a **9.21** Watch or listen to Rob and Jenny. Is the date a success?
- b Watch or listen again and answer the questions.
- What excuse does Rob give for being late?
 - How long has Jenny waited for him?
 - What does Rob suggest they do?
 - What does Jenny say that Rob could do?
 - Who is Rob interested in: Holly or Jenny?
- c Look at the **Social English** phrases. Can you remember any of the missing words?






Social English

- Rob I'm so _____.
- Rob I _____ I'm sorry.
- Jenny I don't _____ like a walk.
- Jenny It's been a _____ day.
- Jenny I didn't _____ to say that.

- d **9.22** Watch or listen and complete the phrases. How do you say them in your language? Then watch or listen and repeat the phrases.
- e Complete conversations A–D with **Social English** phrases 1–5. Then practice them with a partner.

A	Let's go to the park.	 And anyway, it's raining.
B	You're half an hour late!	
	The dinner's cold.	 The traffic was terrible.
C	Your mother is so annoying!	My mother? Annoying?
	Sorry, 	
D	Let's watch a movie on TV.	No, I'm tired. 

CAN YOU...?

-  give and understand directions on the street
-  give and understand directions for using public transportation
-  apologize



Go online to watch the video, review the lesson, and check your progress