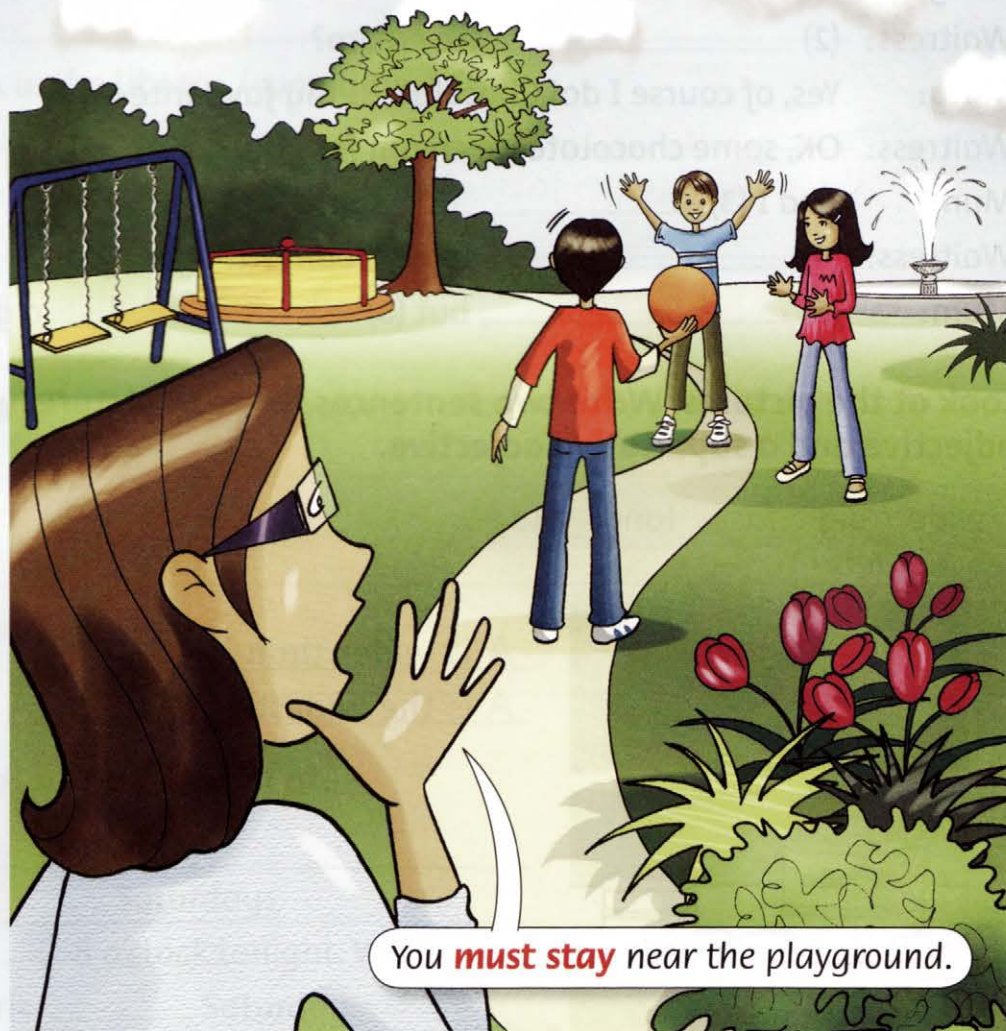


Must



Affirmative

I **must**
you **must**
he **must**
it **must**
she **must**
we **must**
they **must**



You **must stay** near the playground.

We use **must** + base form to tell other people what they have to do.

You **must** play nicely.

Sometimes **you** means 'everyone'.

Although **must** is most commonly used in the **you** form, we can use it in other forms. Note that for **he** and **she** we do not add -s to **must**.

Jane **must** try to improve her spelling.

We can give a more direct order simply by using the imperative form. This is the infinitive without **to**.

Stay near the playground. **Play** nicely.

The imperative form is common on signs and notices.

1 Look at the pictures. Write sentences, using **You must** and an expression from the box.

~~do the dishes~~ tidy your room listen to your teacher do your homework
help other people write thank-you letters wash the car eat your dinner



You must do the dishes.



Mustn't

Negative

I must not
you must not
he must not
she must not
it must not
we must not
they must not

Short forms

I mustn't
you mustn't
he mustn't
she mustn't
it mustn't
we mustn't
they mustn't

In the negative, we often use the short form **mustn't** + base form.

*We **mustn't** talk in class.*

We can also use **don't** + infinitive without **to**. This is the negative imperative.

***Don't** talk in class.*



2 Complete the table.

	Must	Mustn't	Imperative	Negative imperative
1 come	You must come.	You mustn't come.	Come.	Don't come.
2 stay				
3 listen				
4 wait				
5 go				

3 Look at the notice. Write sentences, using **You must** and **You mustn't**.



- 1 You mustn't feed the animals.
- 2 _____
- 3 _____
- 4 _____
- 5 _____
- 6 _____
- 7 _____

4 Look at the picture. Write sentences, using **You must** and **You mustn't** and a verb and an expression from each box.

Verbs

~~climb~~ sit play drop walk

Expressions

on the path on the bench ~~the trees~~ litter in the fountain

- 1 You mustn't climb the trees.
- 2 _____
- 3 _____
- 4 _____
- 5 _____

