

5 We have to hurry!

Have to
The imperative
Why and because

Have to and the imperative



I have to
you have to
he has to
she has to
we have to
you have to
they have to

turn left

We use **have to** + base form when we talk about something that we must do.

*It's late. We **have to** leave now.*

We often use **have to** when we give directions to someone.

*You **have to** go left at the traffic lights.*

The past simple form is **had to** + base form.

*They **had to** go over the bridge.*

When giving directions, we often use the imperative. This is a more direct form of giving an instruction than **have to**.

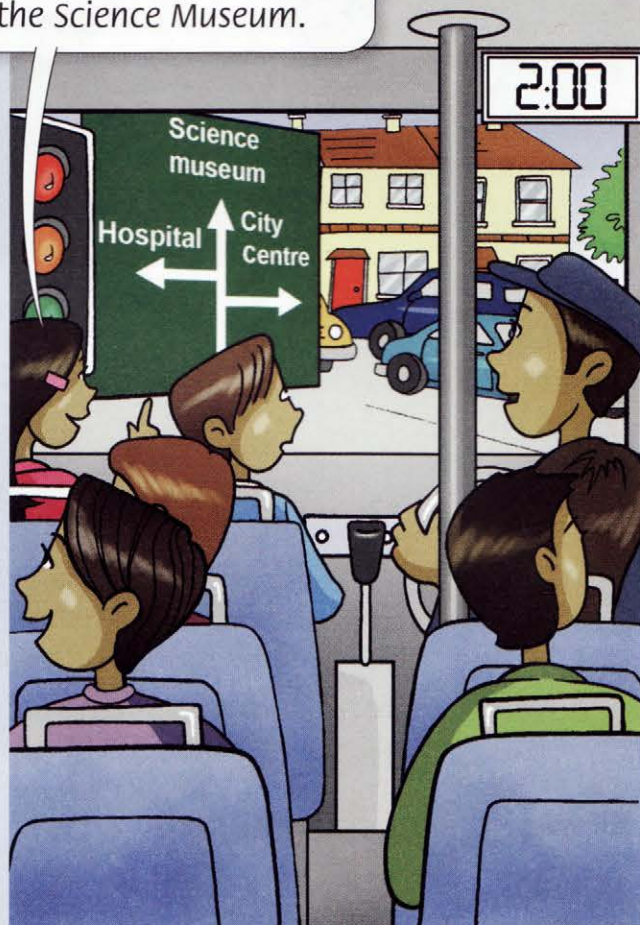
Turn left. Go over the bridge.



We often use **at** when we talk about where we have to turn or stop.

*Stop **at** the traffic lights. Go straight on **at** the roundabout.*

You **have to** go straight on for the Science Museum.



1 Look at the list of jobs. Write sentences with the correct form of **have to**.

- 1 Jamie has to help Dad in the garden.
- 2 _____
- 3 _____
- 4 _____
- 5 _____
- 6 _____

- 1 Jamie / help Dad in the garden
- 2 Bob and Paul / wash the car
- 3 Amy / make lunch
- 4 you and I / go shopping
- 5 I / do my homework
- 6 you / clean the kitchen

2 Complete the conversation. Use **have to** and the verb in brackets.

Anna Excuse me. Where's the cinema?

Mr Lee You ¹ have to go (go) straight on for 200 metres. Then, you ² _____ (turn) left. At the roundabout, you ³ _____ (turn) right.

Anna OK, thanks.

Mr Lee No, wait. You ⁴ _____ (go) over the railway line.

Anna Yes, I know it. The cinema's by the petrol station.

Mr Lee No, you ⁵ _____ (go) past the petrol station. The cinema's another 500 metres.

3 Look at the map. Give directions from the school to the Science Museum. Use **have to** and the words from the box.

~~go straight on~~ go over turn left turn right go straight on

From the school, you

¹ have to go straight on. Then

you ² _____

at the bank. After that, you

³ _____

the bridge. Then you

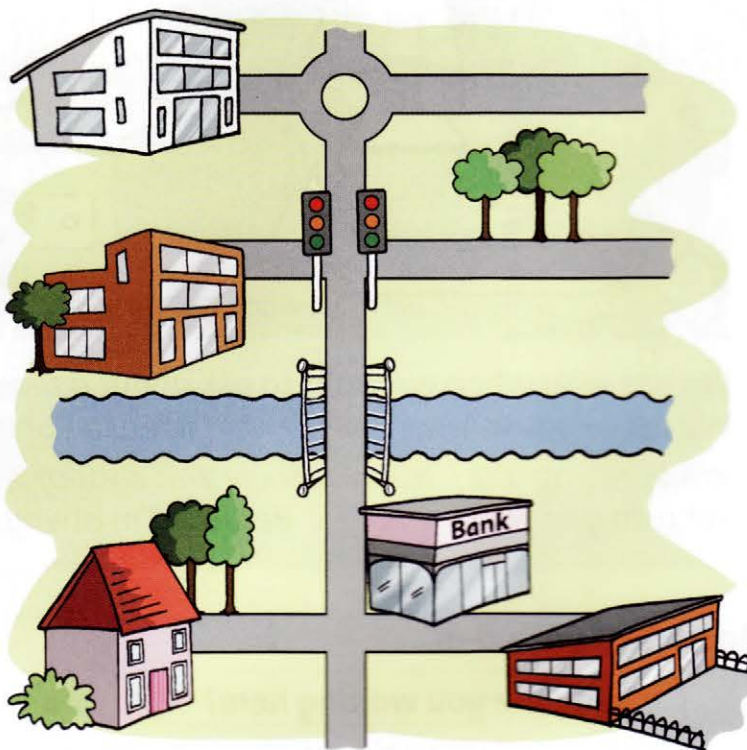
⁴ _____

at the traffic lights. Finally, you

⁵ _____

at the roundabout. The Science

Museum is the big white building.



4 Look at exercise 3. Write about the journey in the past. Use **I had to**.

1 First, I had to go straight on.

2 Then, _____.

3 After that, _____.

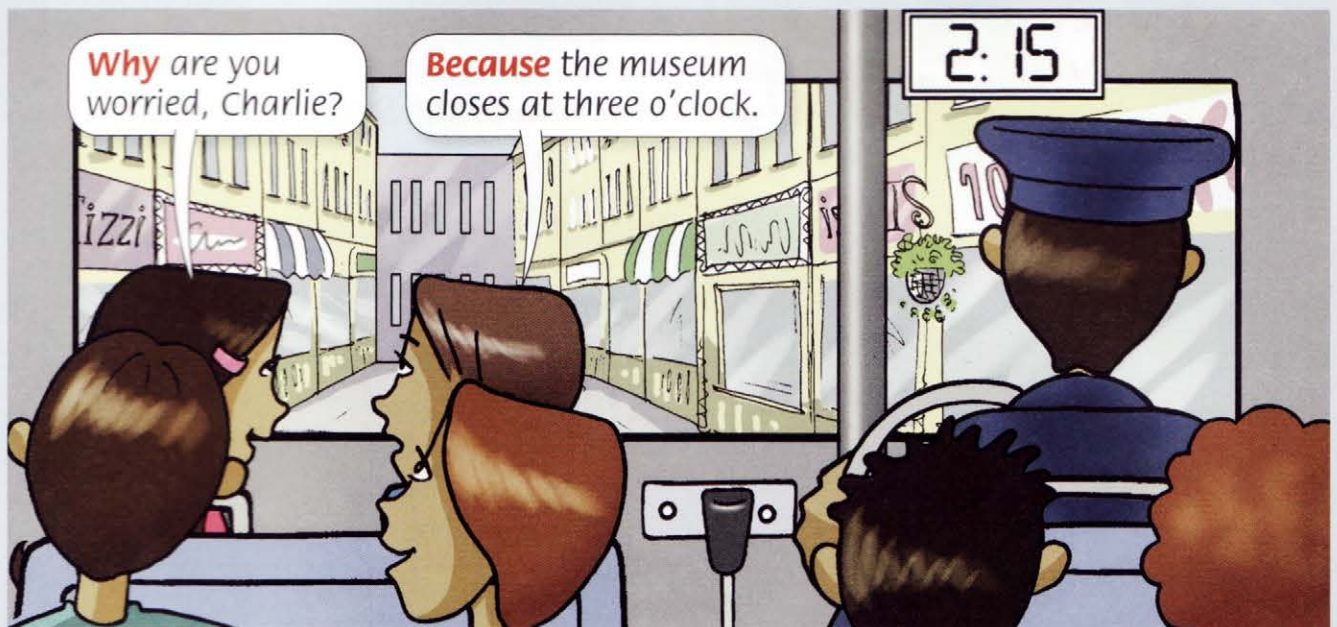
4 Then, _____.

5 Finally, _____.

5 Change the instructions into the imperative.

- 1 You have to go straight on. Go straight on.
- 2 You have to turn left at the roundabout. _____
- 3 You have to go back to the city centre. _____
- 4 You have to turn right at the traffic lights. _____
- 5 You have to go over the railway line. _____
- 6 You have to go straight on at the roundabout. _____

Why and because



We use **why** when we want to ask about a reason or cause.

We use **because** when we explain a reason or cause.

Why are you late? **Because** there was a lot of traffic.

Why do you eat so quickly? **Because** I'm always hungry!

6 Match 1–8 with a–h.

- | | |
|--|---|
| 1 <u>f</u> Why are you waiting here? | a Because I study hard. |
| 2 _____ Why is Tara so tired today? | b Because it's my birthday tomorrow. |
| 3 _____ Why do you like books? | c Because it's Wednesday. |
| 4 _____ Why do you find exams easy? | d Because you didn't bring a map! |
| 5 _____ Why are you so happy? | e Because it's my favourite food. |
| 6 _____ Why is the museum closed? | f Because I'm going to meet Alice here. |
| 7 _____ Why do you eat pizza so often? | g Because I enjoy reading. |
| 8 _____ Why are we lost? | h Because she didn't sleep well last night. |

7 Write the words in the correct order to make questions.

1 why / hungry / are / you

Why are you hungry?

2 England / so green / why / is

3 drive / do / you / so fast / why

4 Harriet / is / why / crying

5 did / get / why / we / lost

6 score / a lot of / does / Frank / goals / why

7 enjoy / you and Jason / why / camping / do

8 arrive / at the concert / late / Penny and Tina / did / why

9 why / Cara / tired / is / always

8 Look at exercise 7. Write answers. Use **Because, a pronoun and the words from the box.**

~~not eat breakfast~~ not leave home on time go to bed late go the wrong way
be in a hurry like being outside be a good player it rain a lot there be sad

1 Because I didn't eat breakfast.

2

3

4

5

6

7

8

9