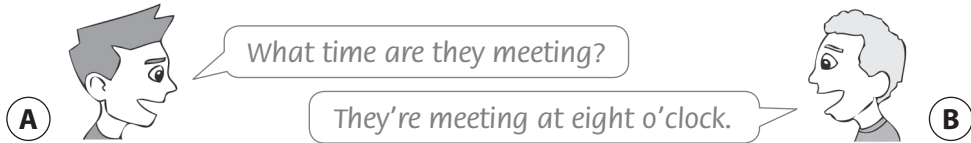


Student A

Ask and answer to find out about the two school trips. Choose the trip you would like to go on. Tell your partner why.



What time are they meeting?

Trip A

7:00

How are they travelling?

walking (it's nearby)

Where are they going first?

art gallery

What are they having for lunch?

picnic

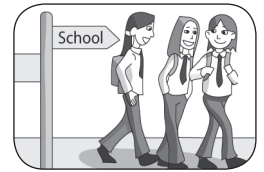
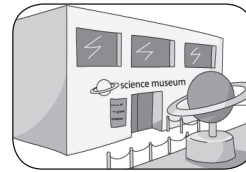
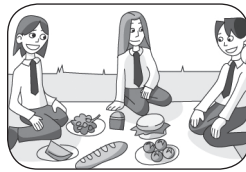
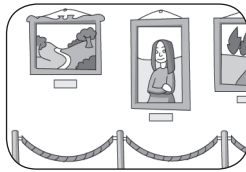
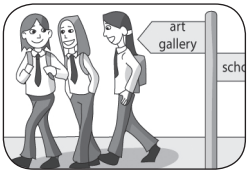
What are they doing after lunch?

science museum

When are they getting back to school? 3:00

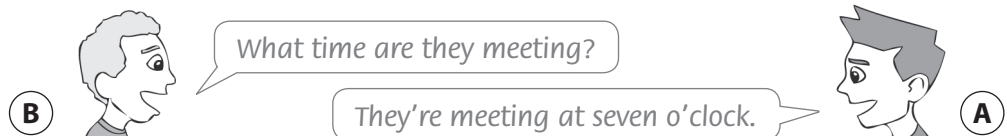
Trip B

8:00



Student B

Ask and answer to find out about the two school trips. Choose the trip you would like to go on. Tell your partner why.



What time are they meeting?

Trip A

7:00

How are they travelling?

Trip B

8:00

Where are they going first?

by coach

What are they having for lunch?

wildlife park

What are they doing after lunch?

fish and chips

When are they getting back to school?

exploring the park

7:00

